

Parent Orientation



Spartan Lyrical Society

★ SEVERNA PARK MIDDLE SCHOOL ★

September 19th 2019

Welcome!

- Agenda
 - Introductions
 - What is Spartan Lyrical Society?
 - Membership Info
 - 2019-20 Programming
 - Getting Involved
 - Keeping in Touch
 - A Word from Mrs. Metcalfe

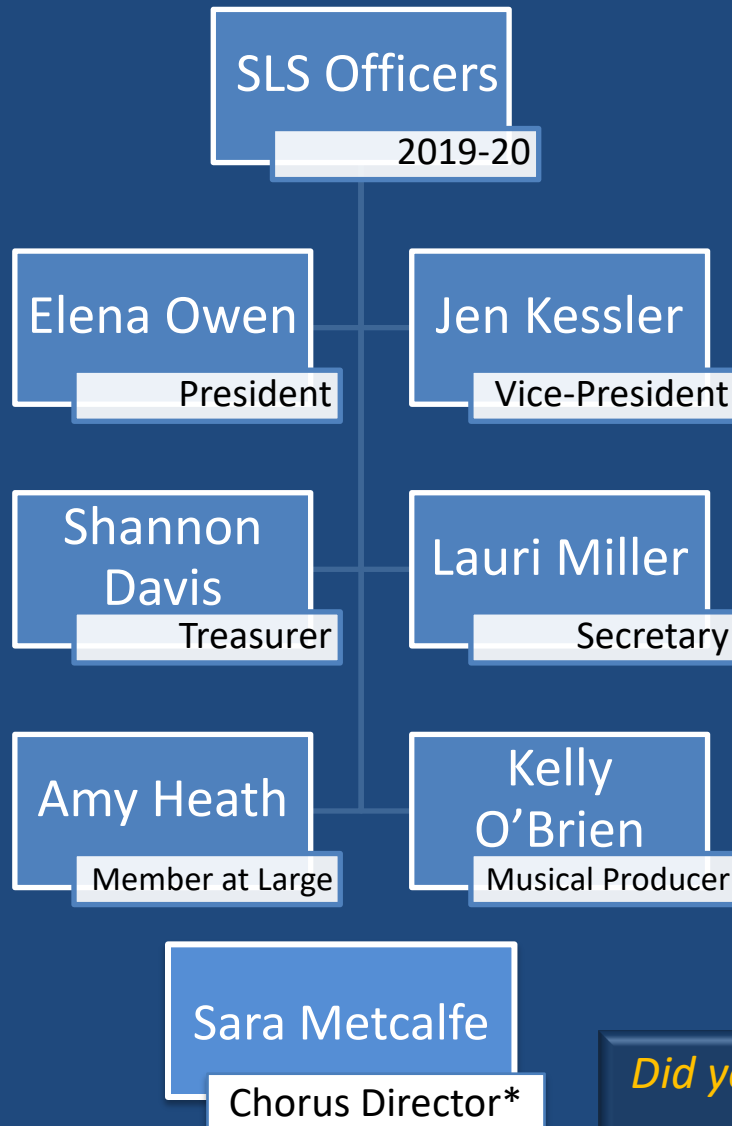


Thank you for holding questions until the end



Did you know? Theater students score up to 65 points higher on verbal SATs and 35 points higher on math SATs. American Alliance for Theatre & Education

Introductions



- **Standing Committees**

- Varsity Choir (*J. Kessler*)
- Membership (*E. Owen*)
- Webmaster (*K. O'Brien*)
- Social Media (*R. Gruppuso*)

- **Special Committees**

- Budget (*S. Davis*)
- Contracts (*K. O'Brien*)
- Drama Camp (*J. Roberts*)
- Fall Musical Revue (*J. McIntyre*)
- Open Mic Night (*Open*)
- Tech Crew Club (*J. Oswald*)

Did you know? We welcome volunteers all year long – even from new members!

* Advisory (Nonvoting)

What is Spartan Lyrical Society?

- ***What it is...***

- booster organization for extra-curricular vocal, drama, and musical theater programming at SPMS
- 501(c)(3) Tax Exempt nonprofit since 2002
- 154 members last year

*Did you know?
SLS got its name from the prior
SPMS mascot, the Spartans.*

- ***What it isn't...***



SLS Annual Membership

- One membership per family
 - Universal Permission Slip
 - Media Release
- Annual Dues: \$25
 - Covers admin and operating expenses
- *Required* for participation in
 - Varsity Choir
 - Drama Camp
 - Fall Musical Revue
 - Tech Crew Club
 - Spring Musical
- Perk
 - Pre-sale tickets to Fall Musical Revue and Spring Musical



*Did you know?
Confidential need-based fee
waivers are available.*



2019-20 Programing



The screenshot shows the website for the Spartan Lyrical Society. At the top is a navigation bar with links: HOME, ABOUT US, OUR ACTIVITIES, CALENDAR, TICKETS, FORMS, and CONTACT US. The main content area features a large image of students performing on stage. Below this, there are several promotional boxes. The first box is for a 'Parent Orientation Meeting' on September 19th at 6pm in Chorus Rm (M105). The second box is for 'Drama Camp!' starting September 25th, open to all students, with activities like acting, singing, dancing, improv, and stage combat. The third box is for 'Varsity Choir Auditions' on September 17th or 18th, 3:15-6:15 p in Chorus Rm. The fourth box is for the 'Next SLS Board Meeting' on October 8th at 7 PM in Chorus Room (M105). The fifth box is for the 'SPMS Music Department Fall Social!' on October 18th, 7-9 pm in Cafeteria. Each box includes a 'Tell Me More' button. At the bottom, there is a footer with the copyright notice: © 2014 by Spartan Lyrical Society. Proudly created with Wix.com.

Spartan Lyrical Society

HOME ABOUT US OUR ACTIVITIES CALENDAR TICKETS FORMS CONTACT US

Spartan Lyrical Society Parent Orientation Meeting

- SEP 19, 6pm in Chorus Rm (M105)
- Parents, find out what's going on!

Tell Me More

Spartan Lyrical Society presents... Drama Camp!

- Open to all students
- 5 weeks starting Sept 25th
- Rotate through:
 - Acting, singing, dancing, improv and stage combat!

Tell Me More View 1 min Video

WELCOME!

The Spartan Lyrical Society (aka "SLS") is a 501(c)(3) non-profit organization that supports extra-curricular vocal, drama and musical theater performing arts programming at Severna Park Middle School.

Tell Me More Join SLS Now Watch Video

Next SLS Board Meeting:

OCT 08 7 PM in Chorus Room (M105)
SPMS
All SLS Members Welcome

Varsity Choir Varsity Choir Auditions

- SEP 17 or 18, 3:15-6:15 p in Chorus Rm
- Sign up for one 5-minute slot
- Open to all chorus students

Tell Me More

SPMS Music Department Fall Social!

- OCT 18, 7-9 pm in Cafeteria
- \$10 for music, pizza and fun!
- All chorus students sign-up here

Tell Me More

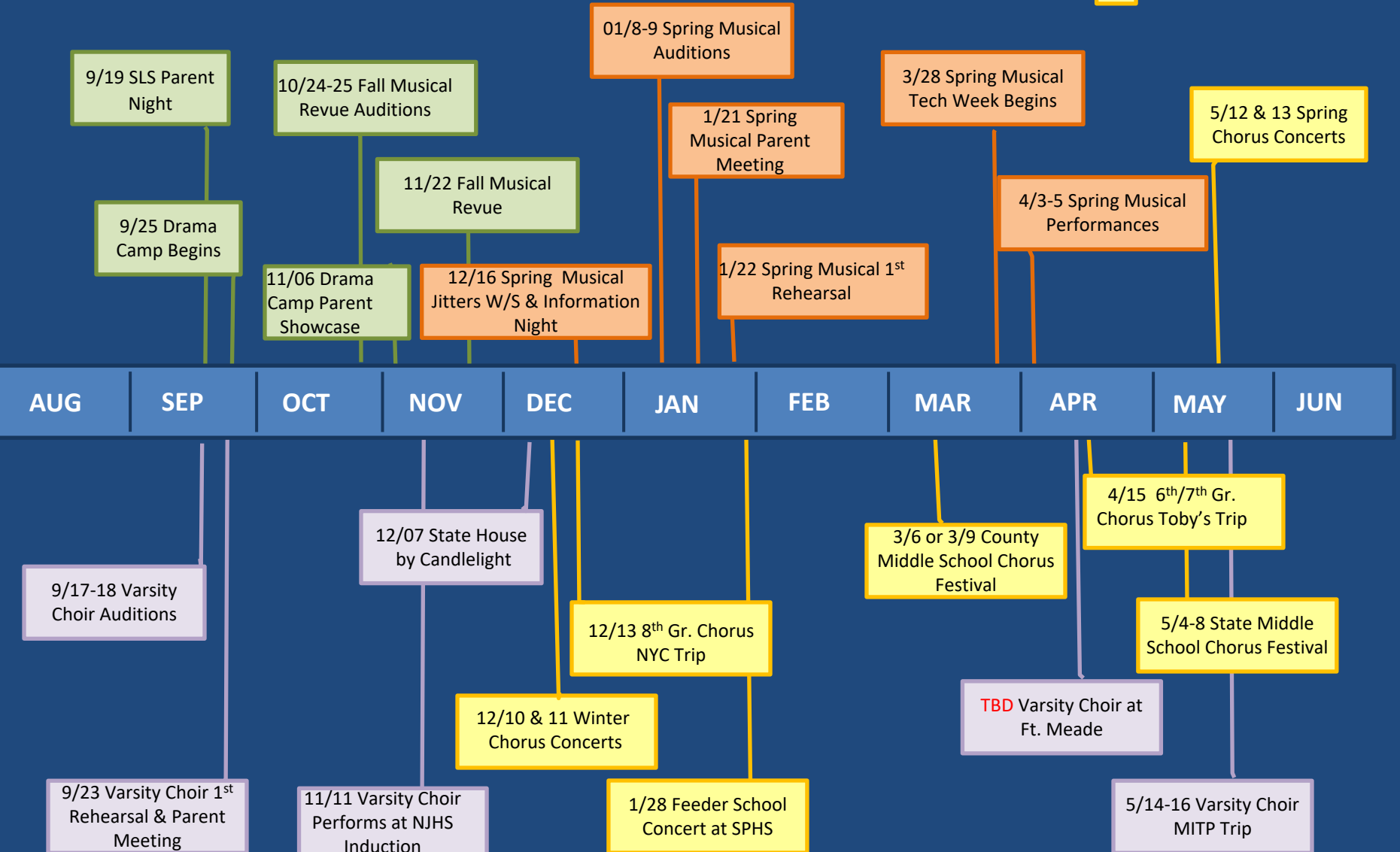
© 2014 by Spartan Lyrical Society. Proudly created with Wix.com

- **Go to *spmssings.org***
 - Find out
 - Sign up
 - Pay fees
 - Get forms
 - Get tickets

SLS Quicklook Calendar

2019-2020

- = Drama Camp, Musical Revue
- = Spring Musical
- = Varsity Choir (VC)
- = Chorus, Including VC



Varsity Choir

- **What is it?** After school combined choir; size limited to around 40
- **Director:** Mrs. Metcalfe
- **SLS Chair:** Jen Kessler
- **Who can join:** Audition required; must be a chorus student
- **Audition Dates:** SEP 17 or 18
- **Rehearsals:** Starts SEP 23, Mondays 3-5 pm
- **Fee:** \$100 covers uniform rental, t-shirt, MITP deposit (plus SLS membership)
- **Performance Attire:** Issued dress uniform, custom t-shirt
- **Performances:** Same as chorus plus additional opportunities / festivals



Drama Camp

- **What is it?** After school series including Vocal-Dance-Acting-Improv-Stage Combat; feeder to Fall Musical Revue
- **Faculty Advisor/Directors:** Sara Metcalfe, Atticus Boidy, Alec Moyes, Karah Parks, Kristin Rigsby, Phil Kittiver
- **SLS Chair:** Jodi Roberts
- **Who can join:** Any SPMS student
- **Meets:** Five Wednesdays 3-5:30p, starts SEP 25
- **Fee:** \$50 plus SLS membership; fee waived for FMR
- **Attire:** Comfortable clothes/dance shoes, if available
- **Parent Showcase:** Informal showcase NOV 06;
- **Bonus:** Song/dance performed as group number in Fall Musical Revue (NOV 22)

**Lasting
friendships!**



Fall Musical Revue

- **What is it?** “Show-ready” group / solo song, dance, instrumental music plus MCs
- **Theme:** Presenting...Peace, Love and Rock n’ Roll
- **Directors:** Sara Metcalfe, Atticus Boidy
- **SLS Chairs:** Joni McIntyre
- **Who can participate:** Audition required; any SPMS student
- **Auditions:** OCT 03 sign-ups begin, OCT 24 or OCT 25 by appt
- **Rehearsals:**
 - One-on-Ones NOV 7 or NOV 8
 - Cue-to-Cue NOV 20 & Dress Reh. NOV 21
- **Fee:** No fee for Drama Campers; others \$20 plus SLS membership
- **Attire:** Costumes are self-provided

We love
Our
MCs!



- **Performance:** NOV 22
- **Tickets:** \$8

Open Mic Night

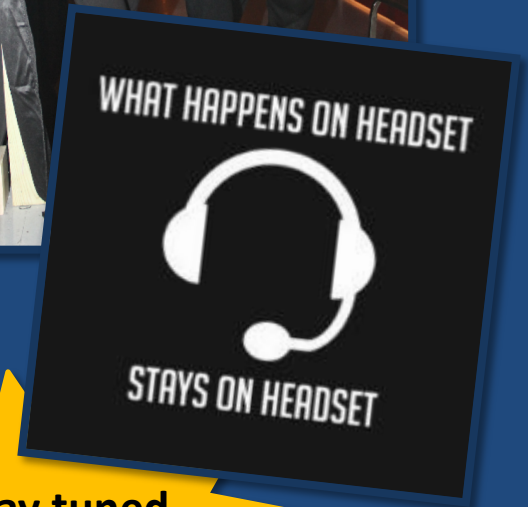
Very
popular
parent-free
event!

- **What is it?** Karaoke fundraiser for Varsity Choir
- **SLS Chair(s):** Open
- **Who can participate:** Any SPMS student; no auditions; spaces limited
- **Rehearsals:** None
- **Fee:** Included in ticket price
- **Attire:** School appropriate
- **Performances:** Fall – NOV 15; Winter – FEB 7
- **Tickets:** \$10 door; includes pizza, drink, raffle ticket



Tech Crew Club

- **What is it?** After school series during spring musical season focusing on backstage operations and stage management
- **SLS Chair:** James Oswald
- **Who can join:** Any SPMS student (limit 32)
- **Meets:** FEB 29, MAR 7 and MAR 14 from 10-12:30p; aligned with musical
- **Fee:** \$25 SLS Membership
- **Attire:** Comfortable clothes. Closed shoes
- **Performances:** None; Show Tech Crew is selected from TCC members (about 20; nominal extra fee)



Stay tuned
for more
details!

The Spring Musical Is...

The Spring Musical Is...



A hilarious farce with sentimental pirates, dim-witted young lovers and an eccentric Major-General, based on the Gilbert and Sullivan operetta.

Set sail with this classic comedy that boasts one of the most famous patter songs in musical theatre history. The wit and whimsy of Gilbert and Sullivan's classic score is suffused with a modern sensibility in *The Pirates of Penzance JR.*, a swashbuckling musical journey!

Spring Musical

- **Directors:** Sara Metcalfe, Atticus Boidy, Morgan Gingerich
- **SLS Producer:** Kelly O'Brien
- **Who can participate:** Audition required; any SPMS student; cast size limited to around 60
- **Audition Jitters & Info:** DEC 16
- **Auditions:** JAN 8 or 9 vocal; JAN 10 for dance
- **Parent Meeting:** JAN 21
- **Rehearsals:** T, W, Th 3-6; and Sat 10-2; only when called
- **Fee:** \$110 plus SLS membership
- **Performances:** APR 03-05
- **Parent Participation Required:** Committee and chaperone



Festivals & Trips

- **Music In The Parks**
 - Varsity Choir
 - Busch Gardens, Williamsburg, VA
 - MAY 14-16
- **Music Festivals**
 - Varsity Choir
 - All County (MAR 6 or 9)
 - All State Chorus (MAY 4-8)
one of the days
- **Toby's Dinner Theater**
 - 6/7 Grade Chorus
 - APR 15
- **NYC- Broadway Show**
 - 8th Grade Chorus
 - DEC 13

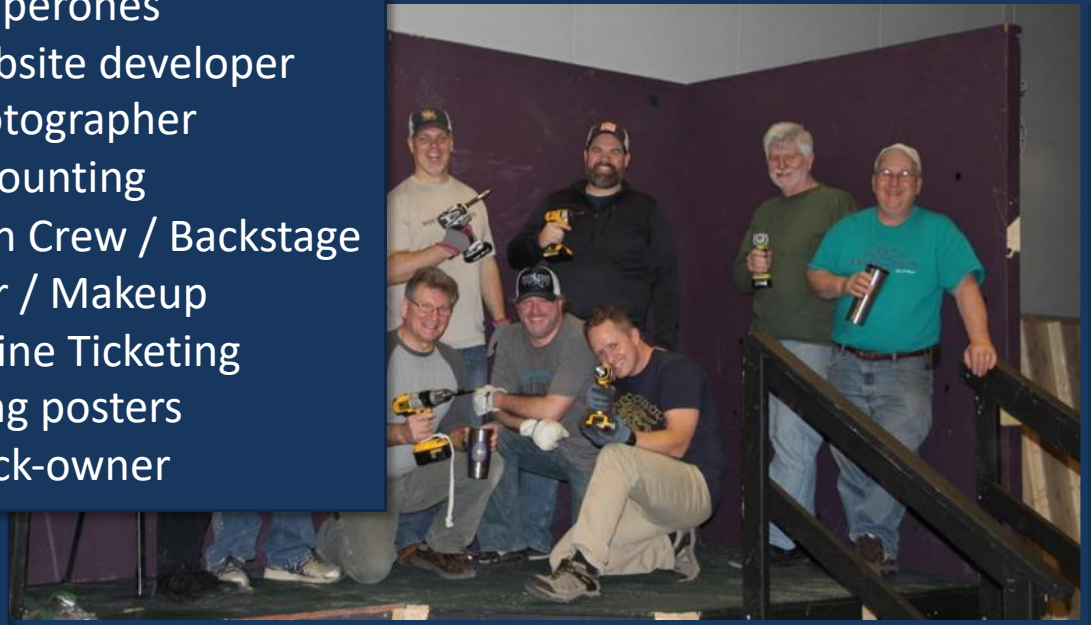


Did you know? SLS greatly subsidizes the bus transportation on trips and pays for performance accompanists.

Getting Involved



Graphic artists
Carpenters
Sewing skills
Painters
Chaperones
Website developer
Photographer
Accounting
Tech Crew / Backstage
Hair / Makeup
Online Ticketing
Hang posters
Truck-owner



Did you know? We simply cannot do all we do without help from parents like you!

Keep in Touch

- Board Meetings
 - 2nd Tuesday of the Month
 - 7 pm Chorus Room (M105), check website to confirm
- Surveys – Give us Feedback
 - Anonymous; after events



- Email
 - spmsplay@gmail.com

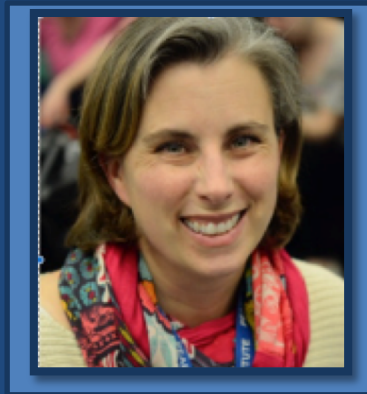
- Website - spmssings.org



- Follow us:



A Word from Mrs. Metcalfe



Questions?

